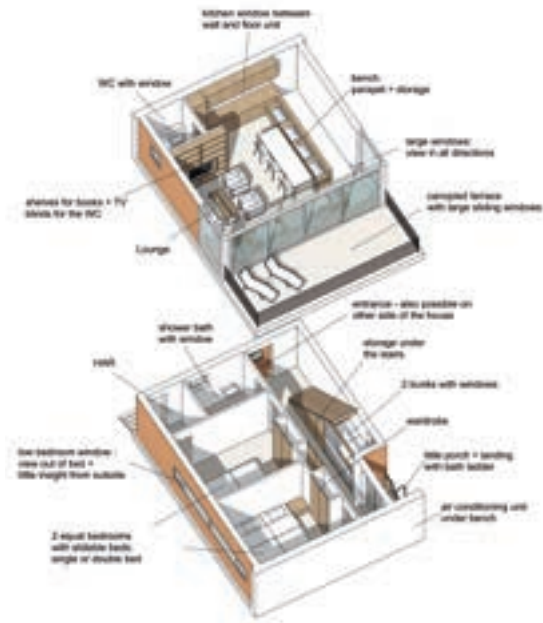


Project No.: 010
Architects name: büro13 architekten
Architects web page: www.buero13.de

Photos: Courtesy of the architects

box will be removed before print

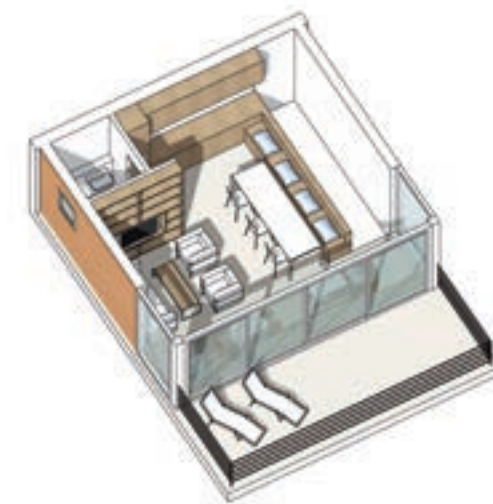
Architects: büro13 architekten
Location: 17440 Kröslin (Marina), Germany
Completion: 2012
Client: Formstaal GmbH
Gross floor area: 104 m²
Function: living
Built on water: steel pontoon floatational device



WATERKANTHUS 100 KRÖSLIN, GERMANY

Feel the gentle sway of water. The Waterkanthus combine all the advantages of your own home: well equipped, meticulously detailed, set in a marine surrounding or sea-landscapes. A floating structure, simply constructed, creating the foundation for a variable type of house that will fulfill all the requirements of contemporary living. The sliding glass frontage and floor-to-ceiling windows, wrapped around by a terrace, break the contrast of inner and outer worlds. The architects have created thier first floating vaction homes in the Baltic Sea, in the harbor of Kröslin; a symbiosis of functionality and timeless design.





“Lorem ipsum dolor sit amet, consectetur adipiscing elit, sed do eiusmod tempor incididunt ut labore et dolore magna aliqua.” –
Ut enim ad minim veniam
